



FLOODPROTECT Limited
95 Kent Road, Grays
Essex RM17 6DE
United Kingdom

T +44 (0)20 3384 4863
F +44 (0)20 3384 4864
E floodprotect@dsl.li

BASIC – INFORMATION

about the

Flood-Protection High-Water Prevention and Tsunami Protection System



which during the time while waiting for the flood, and invisible hidden in the ground can produce, collect and provide clean environmental-friendly thermal and electrical energy supplied from natural sun-light and heat-pump.

(Issue-Date 2013 07 17)



FLOODPROTECT Limited
95 Kent Road, Grays
Essex RM17 6DE
United Kingdom

T +44 (0)20 3384 4863
F +44 (0)20 3384 4864
E floodprotect@dsl.li

B R I E F I N T R O D U C T I O N

FLOODPROTECT is a recently invented and worldwide patented product with the target to protect people and environment from damages caused by floods, high-water events as well as to protect people and reduce damages from a tsunami. Before the main target to protect people the wall produces a lot of clean energy.

The idea behind this invention is very simple:

FLOODPROTECT is always there. You almost cannot see it, but it will be there when you need it – never know when. Just feel save, and relax !

Without any manpower, electric-power, hydraulics or pneumatics a wall with up to 4 m thickness or even more is coming out of the ground and rising up against the increasing water level. **The Wall-Height is from 1m to 8m – or even more if necessary.**

The Wall-Length can be from 12 m to 5000 m or more in just one single piece.

Of course it is also possible to move it up by pumping in water within some minutes. In case of a tsunami this are the main important minutes to survive. (see tsunami-application)

There are many systems and even patents for similar applications such as our product, but there is one big difference. The one thing is to look nice on paper and during theoretical discussion and sketches on dry paper, the other thing is to be practical and cost-effective.

FLOODPROTECT is just putting together already existing and long-time experienced technologies and companies to a new application and product.

Of course we have been expanding the already existing technologies with some new and clever know-how. This is the reason why it was possible to apply for international patents for FLOODPROTECT which herewith we are very proud and excited to introduce to you.

The customer is the government of a country, the local government of a district, the city or a private organisation - or even a private person who likes to protect his own property.

The **Consulting and Planning Organisation** is planning and calculating the project.

The local **Civil-Engineering** company is doing the construction and installation on site.

The **Concrete Part Producer** supplies the in a factory pre-fabricated concrete parts.

The **Panel Producer** supplies the in a factory ready made protection-walls, or the panel is assembled on site based on the worldwide patented FLOODPROTECT sandwich technology.

At last: There are local contracts and local investment and essential work for local companies and employees for the protection of the life and precious goods of local people.

We hope you like it and we are looking forward to your comment, feed-back and hints.

Thank you very much in advance !



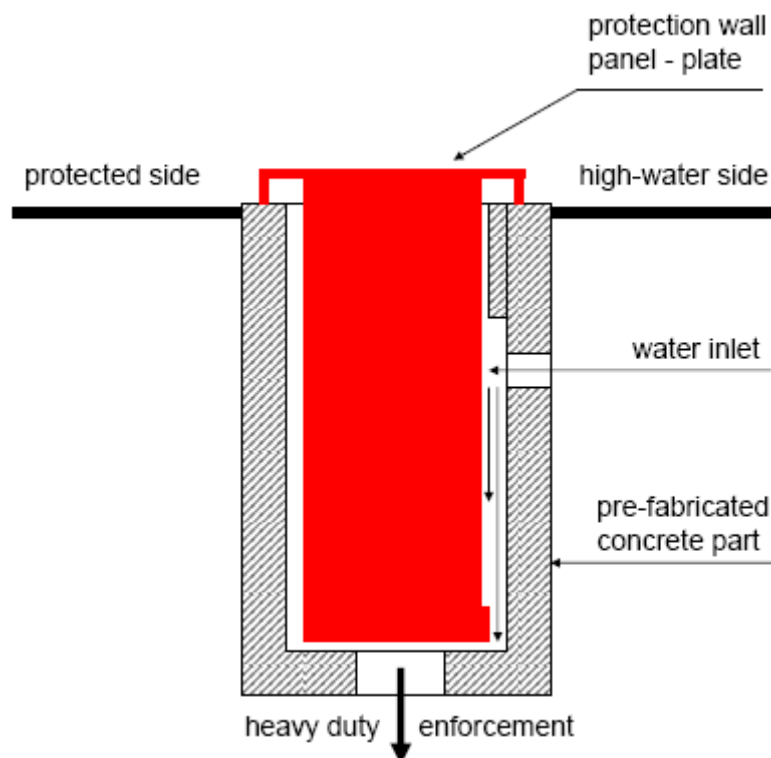
FLOODPROTECT Limited
95 Kent Road, Grays
Essex RM17 6DE
United Kingdom

T +44 (0)20 3384 4863
F +44 (0)20 3384 4864
E floodprotect@dsl.li

THE MAIN FACTS AT JUST 1 PAGE

- WALL HEIGHT from 1 m up to 8 m – or even more if really necessary
WALL WIDTH from 0,5 m up to 4 m – or even more if really necessary
WALL LENGTH from 12 m up to SEVERAL KILOMETERS in just one piece
WALL SHAPE does not need to be straight, it follows the existing coastline.
WALL MATERIAL the wall is made from high grade of RECYCLING MATERIAL
UPSIDE SURFACE can be INVISIBLE because of being covered from sand, or
THE WALL BODY can be used as MASSIV-ABSORBER HEATING SYSTEM
POWER OUTPUT 1 During the time until the wall is not in use for it’s prior target
POWER OUTPUT 2 After the Flood/Tsunami destroyed parts of the wall have to be removed.
LOCAL WORK LOCAL MONEY LOCAL ENERGY The construction of the FLOODPROTECT Wall is done from
POLITICS The politics provides public money for a WIN-WIN-WIN case.

situation before flood / high-water / tsunami

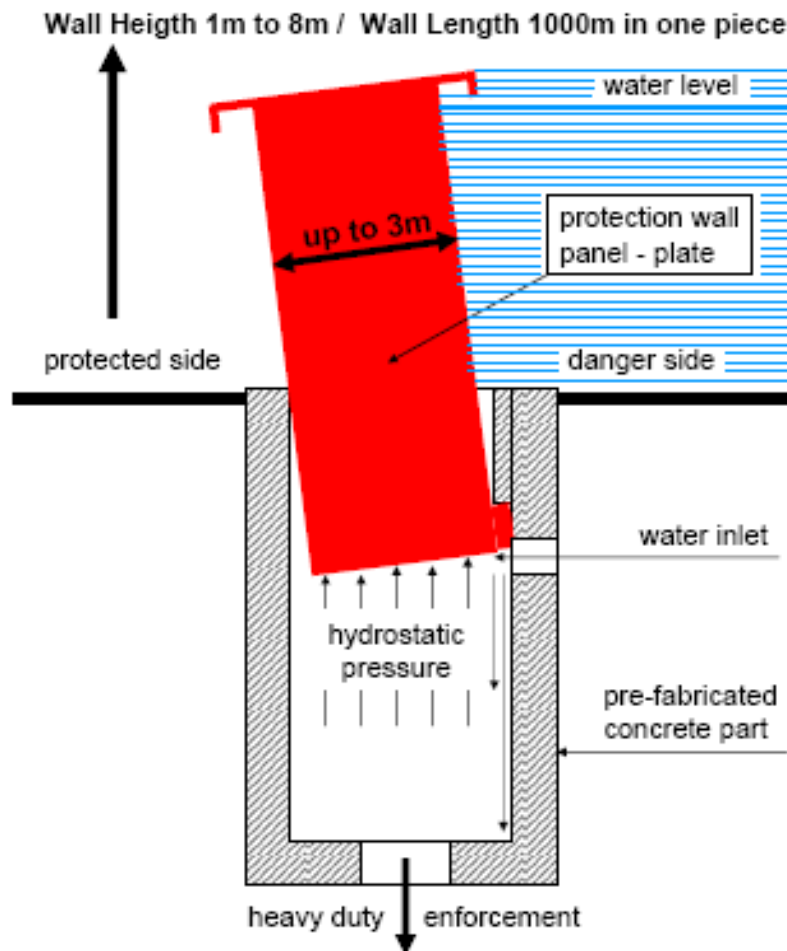


The pre-fabricated concrete parts have been placed in the ground from the civil engineering company, might be with or without heavy duty enforcement.

The protected area might be a city, a village or even a single building like an airport which should be protected against a flood or high-water event.

It also can be a quite long line, one or if necessary even some of them in behind along a coast or river with the target to break down the tsunami wave in a certain area or angle to force it to another way when coming.

situation while(before) flood / high-water / tsunami

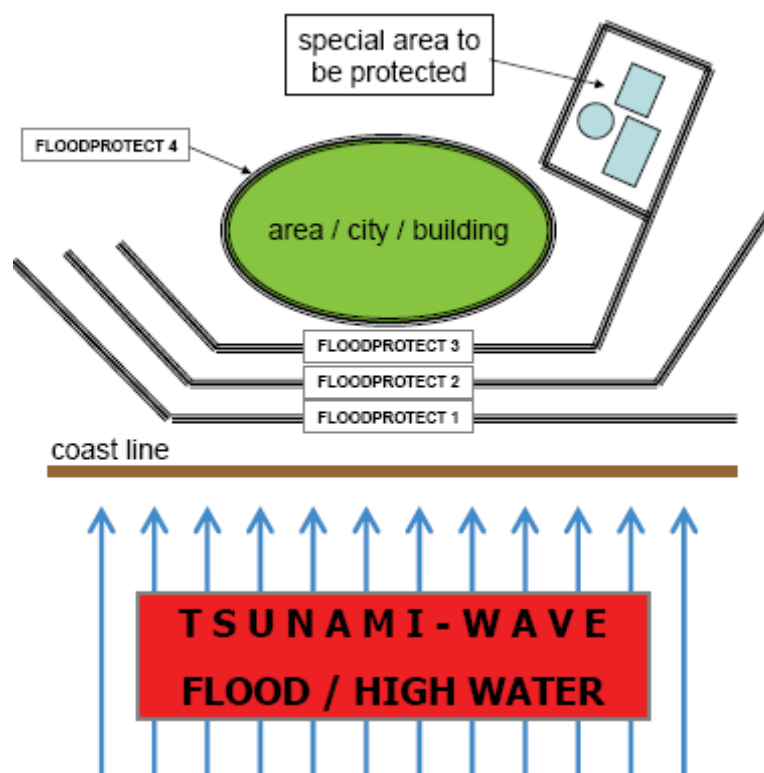


The protection wall is coming up automatically by hydrostatic power driven from the increasing water level. In case of tsunami warning there is enough time left to pump water into the concrete channel to inflate the wall-panel.

In case of a tsunami FLOODPROTECT might not be strong enough to survive without any damage. But in the important seconds it could break the wave...

After the flood: Take out the panels, clean and repair – replace, and wait...

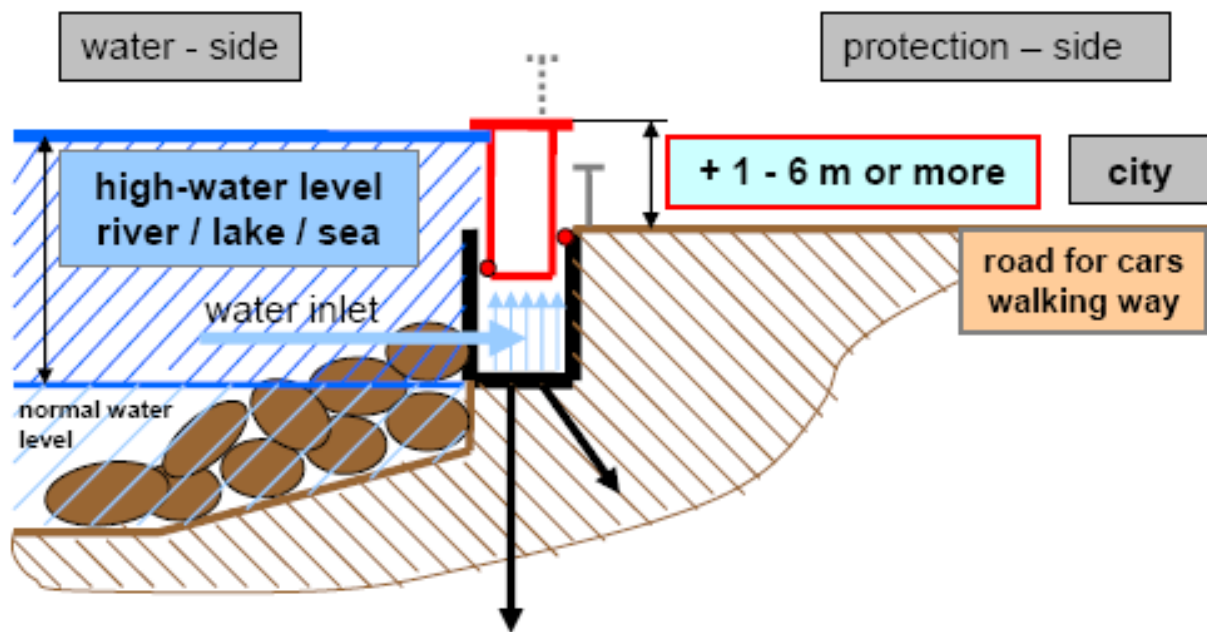
typical location / situation for FLOODPROTECT



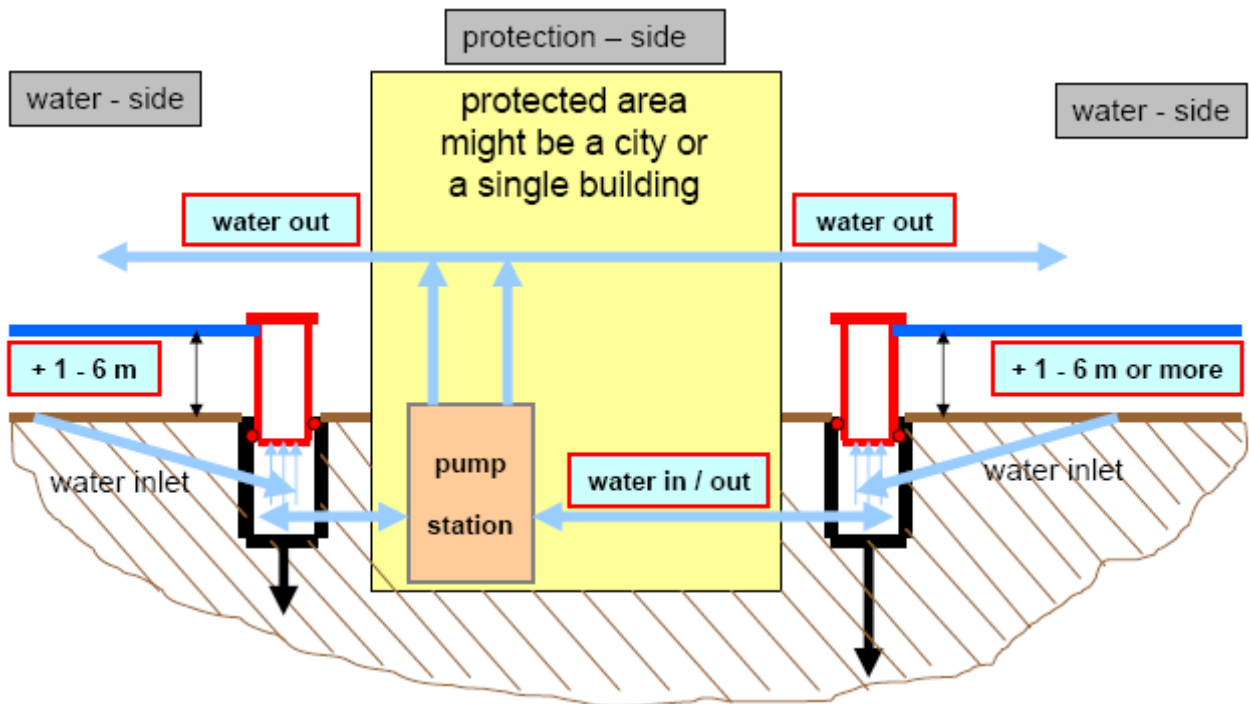
FLOODPROTECT you can use to protect a city or village close to the coastline of the sea or nearby a river, a special building or area such as precious historical buildings, garden or airport – whatever is worth to protect.

...from the technical side it is even possible to protect a single private house.

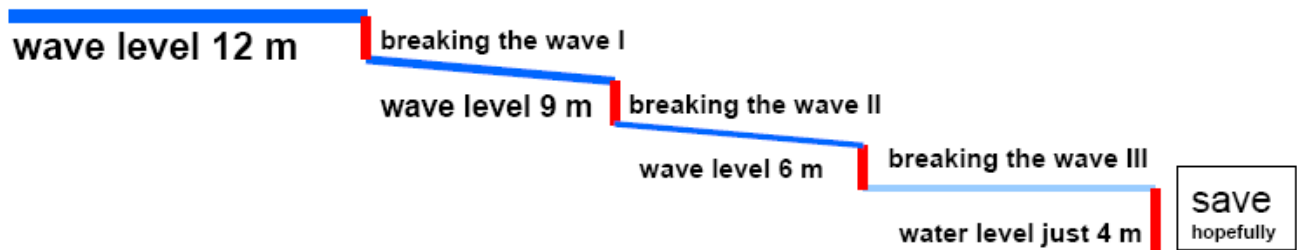
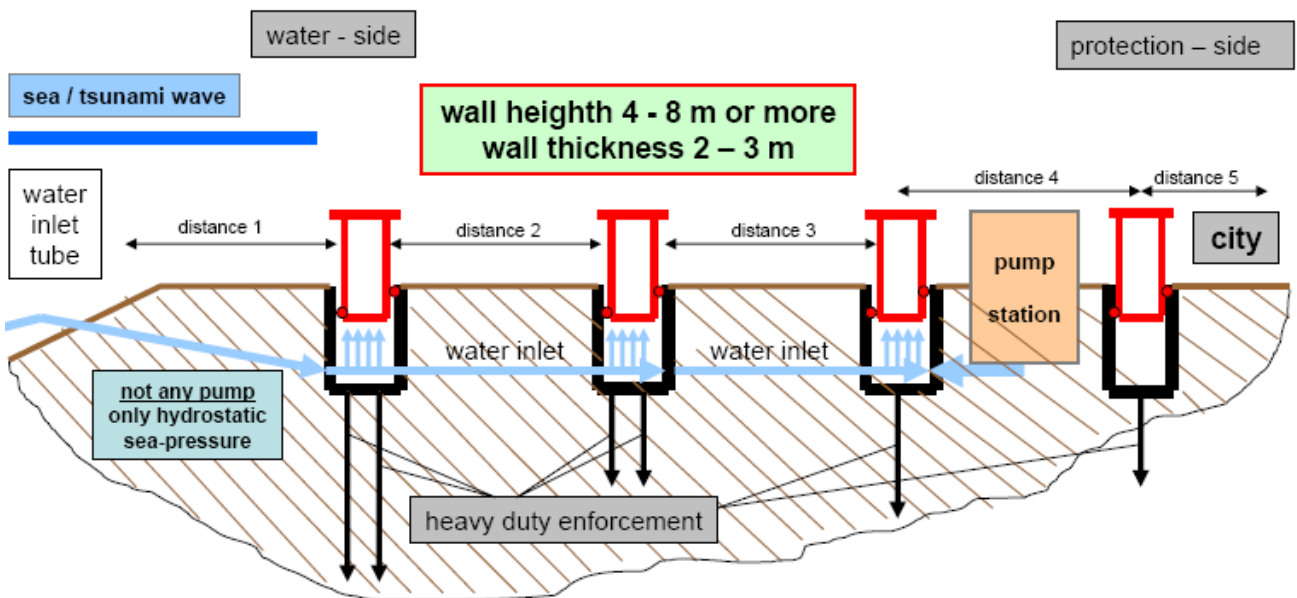
application for a city along river / lake / seaside



application for a single building or around a city



application as an effective tsunami protection





FLOODPROTECT Limited
95 Kent Road, Grays
Essex RM17 6DE
United Kingdom

T +44 (0)20 3384 4863
F +44 (0)20 3384 4864
E floodprotect@dsl.li

We hope that we could give you a first short-cut impression about our idea which is already patented with several worldwide patents and applications.

If you do not like it, please do not tell it to anyone - just keep it for you.
If you like it, but it is not of real interest for you, please recommend and forward this to anyone you know for whom it might be important. *Thank you!*

If you like it yourself please let us go deeper inside together. The next step could be a further discussion about details on telephone, or maybe better a personal meeting for confidential negotiations about a future co-operation.

By the way, talking about confidence: In any case, before we go more in detail and provide you with further technical facts we ask you to sign a confidential-agreement which you can find enclosed or we will send to you.
Just copy it to your official company letter, put a stamp on it and sign it.
Thank you very much in advance for your kind help and understanding.

We are looking forward to hearing from you and meeting you soon.

Please contact us - here are our details.

Mr. Markus Niederdorfer

London Office

2 South Lambeth Place, Flat 2
Vauxhall / Lambeth
SW8 1SP City of London
United Kingdom

M1 +44 (0)79 5065 7859
M2 +43 (0)676 3536 410
E floodprotect@dsl.li
I www.floodprotect.eu



Markus Niederdorfer
Head of Business Development
Senior Sales Manger

95 Kent Road, Grays
Essex RM17 6DE
United Kingdom
T +44 (0)20 3384 4863
F +44 (0)20 3384 4864
E floodprotect@dsl.li

FLOODPROTECT Limited
Company Number 7427344